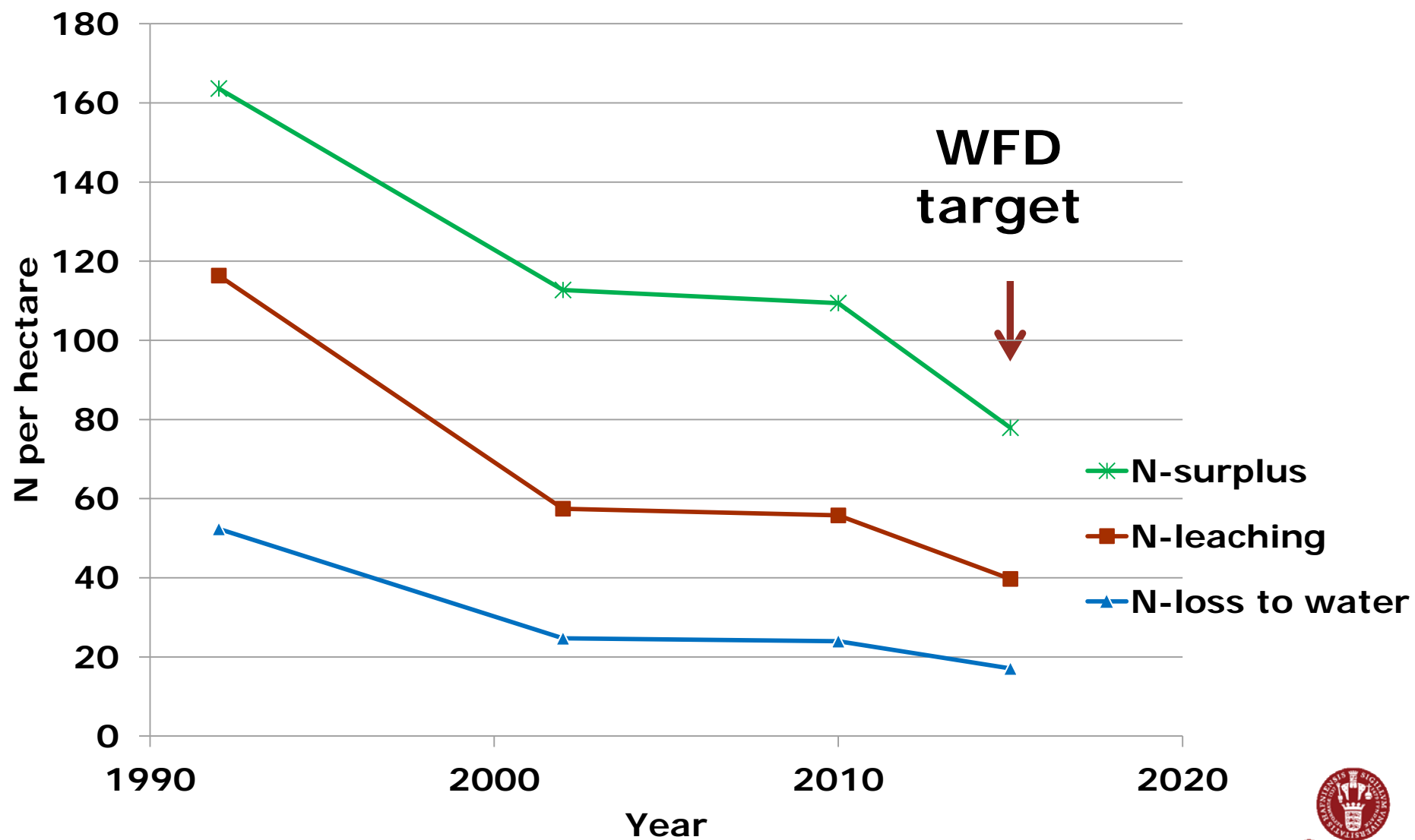


National targets on Nitrogen

Senior Researcher Brian H. Jacobsen
Department of Food and Resource Economics (IFRO)
University of Copenhagen
E-mail: Brian@foi.dk

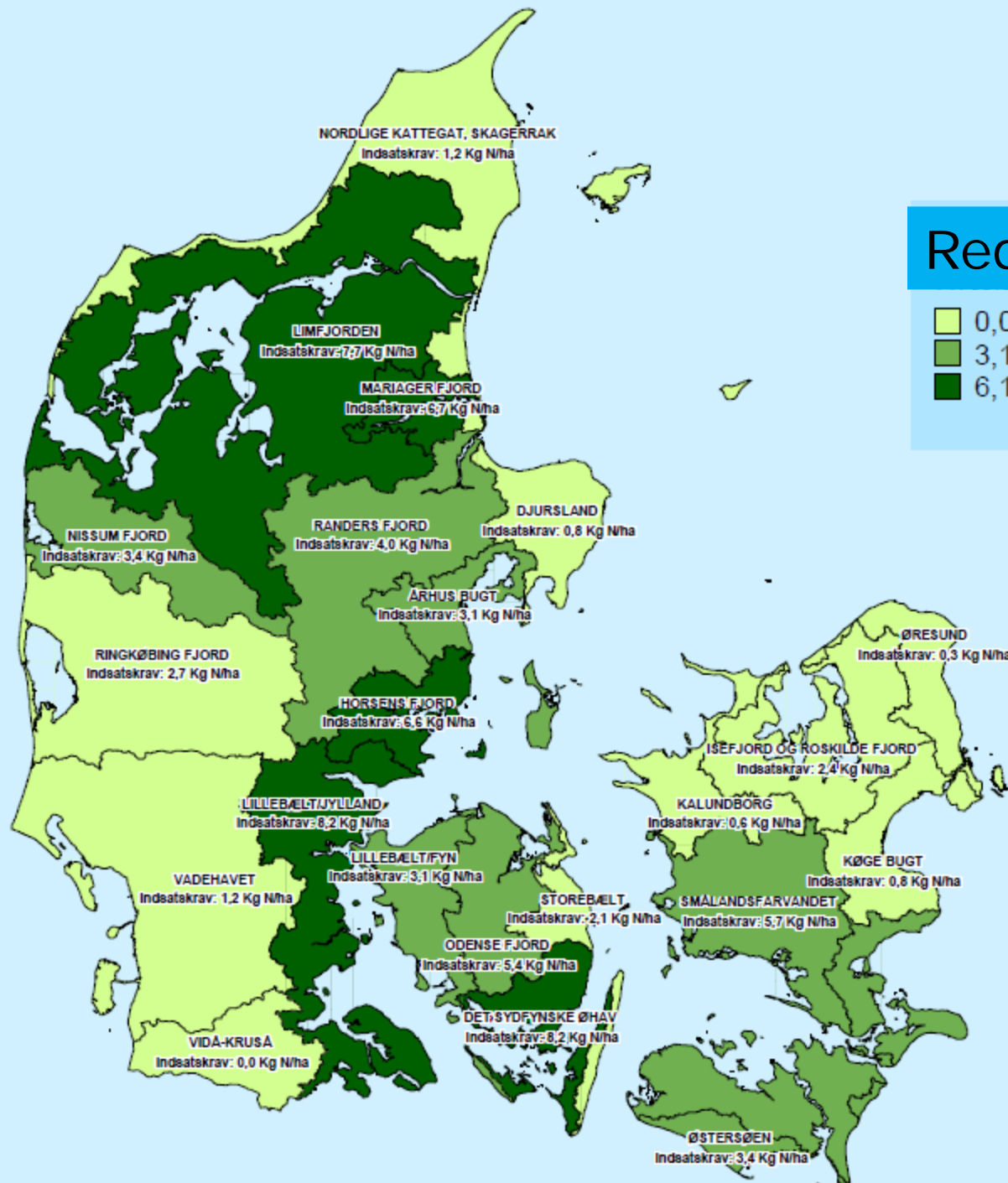


N-surplus, N-leaching and N-loss in DK and WFD



Reduction requirements

- 0,0 til 3,0 Kg N/ha
- 3,1 til 6,0 Kg N/ha
- 6,1 til 9,0 Kg N/ha





Measures to reduce N losses

Target 2027

10.000 t N
+ ?



1. Planning period 2015

9.000 t N



Baseline 2015



Present conditions

Targeted measures

Alternative measures

Measures in V3 areas

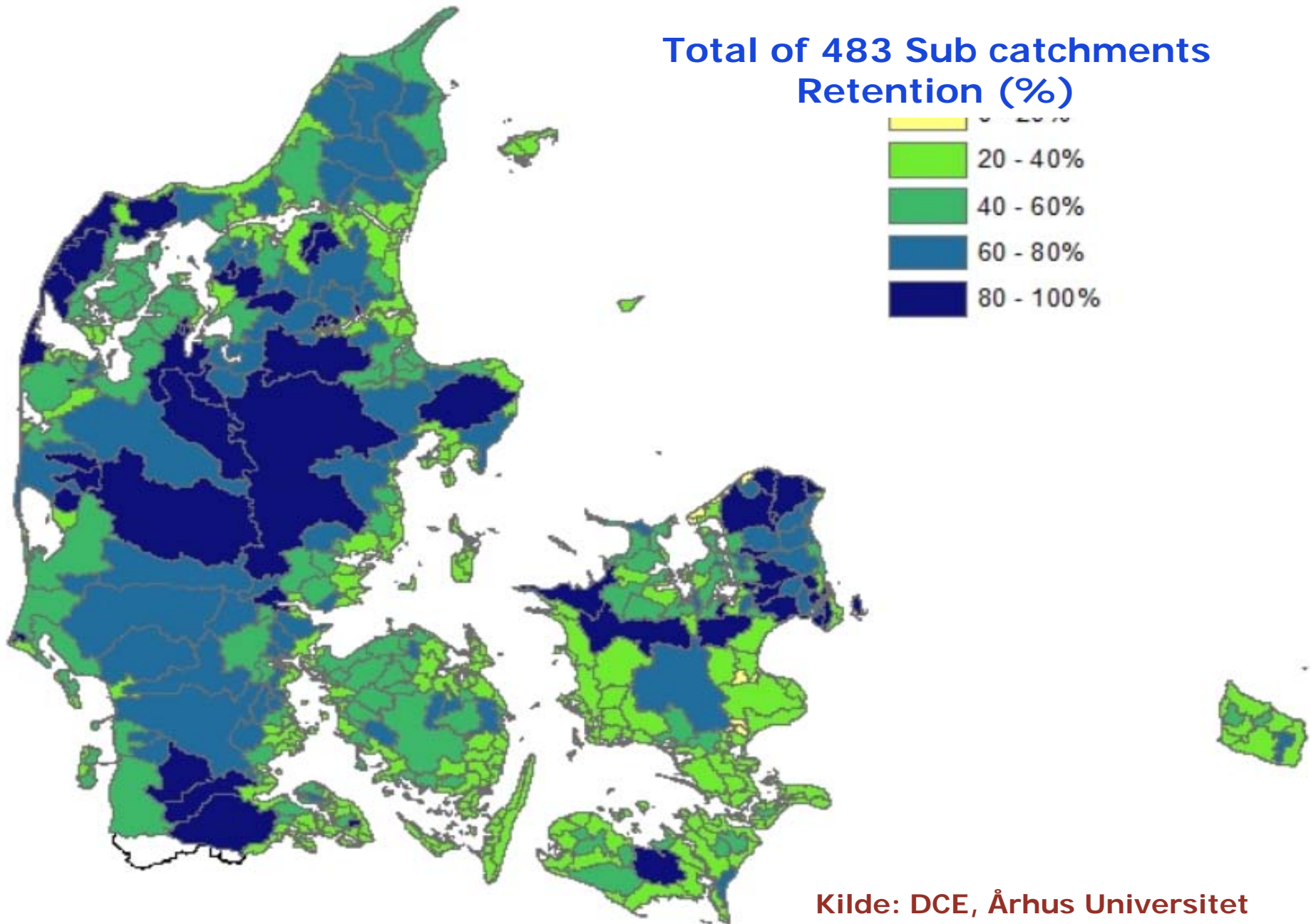
RBMP

- Catch crops
- Riparian zones
- Wetlands

Scattered housing



Total of 483 Sub catchments Retention (%)

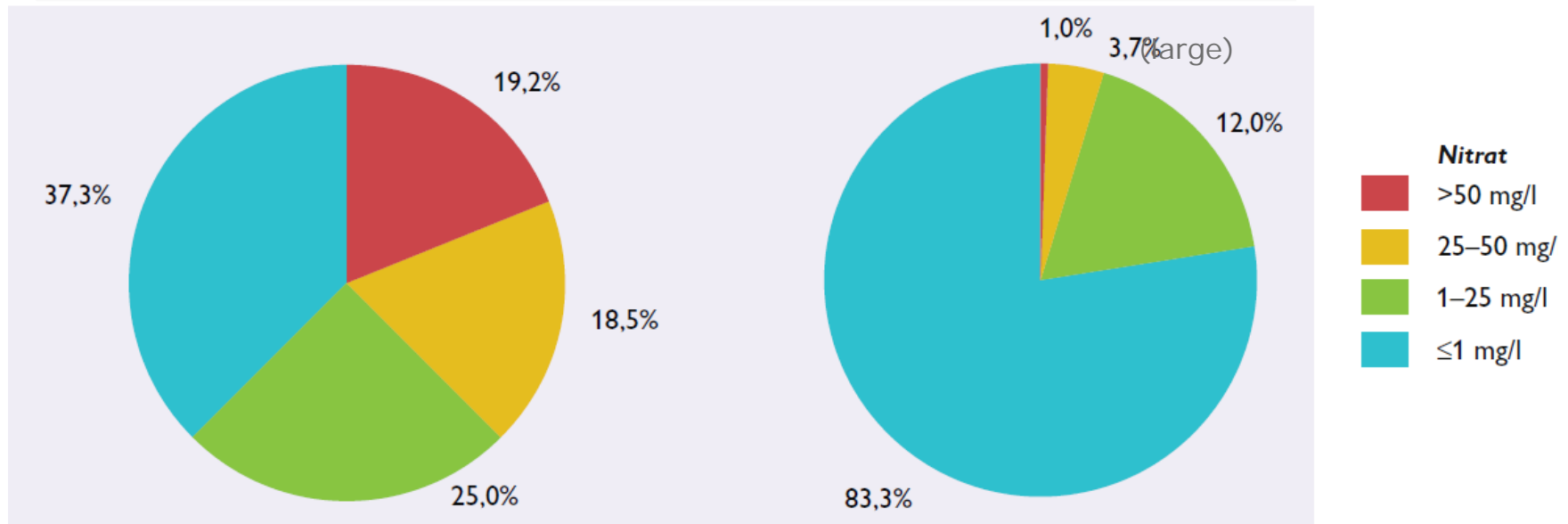


Kilde: DCE, Århus Universitet

Nitrate in Danish groundwater and drinking water (mg/l)

Monitoring wells

Public water supplies

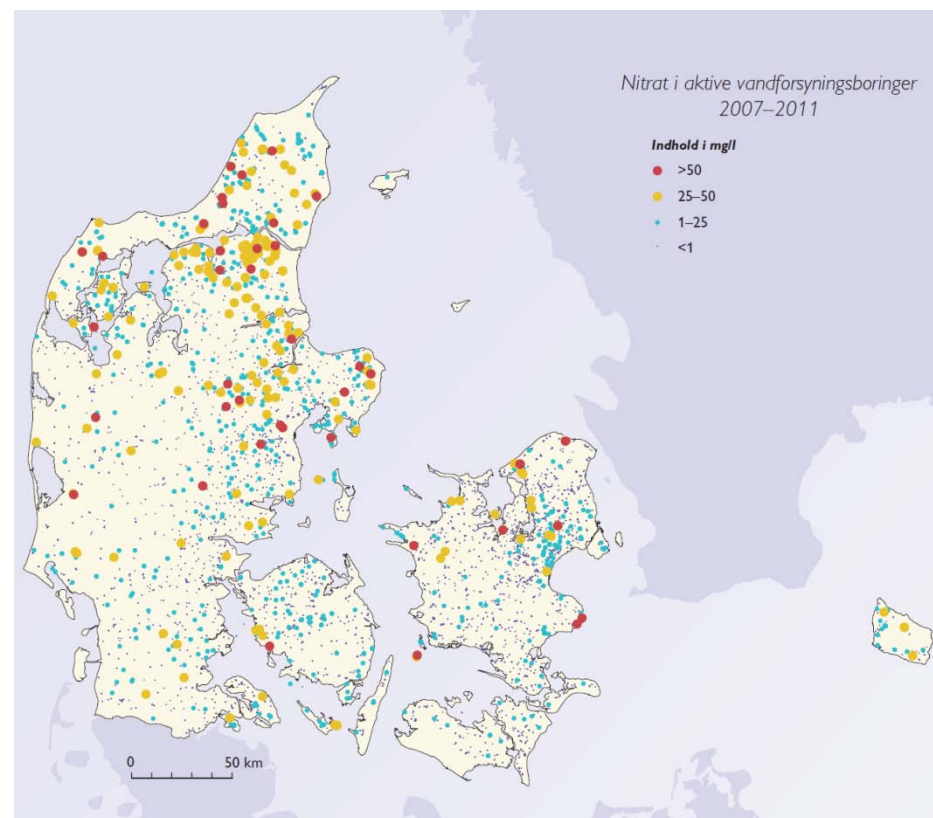
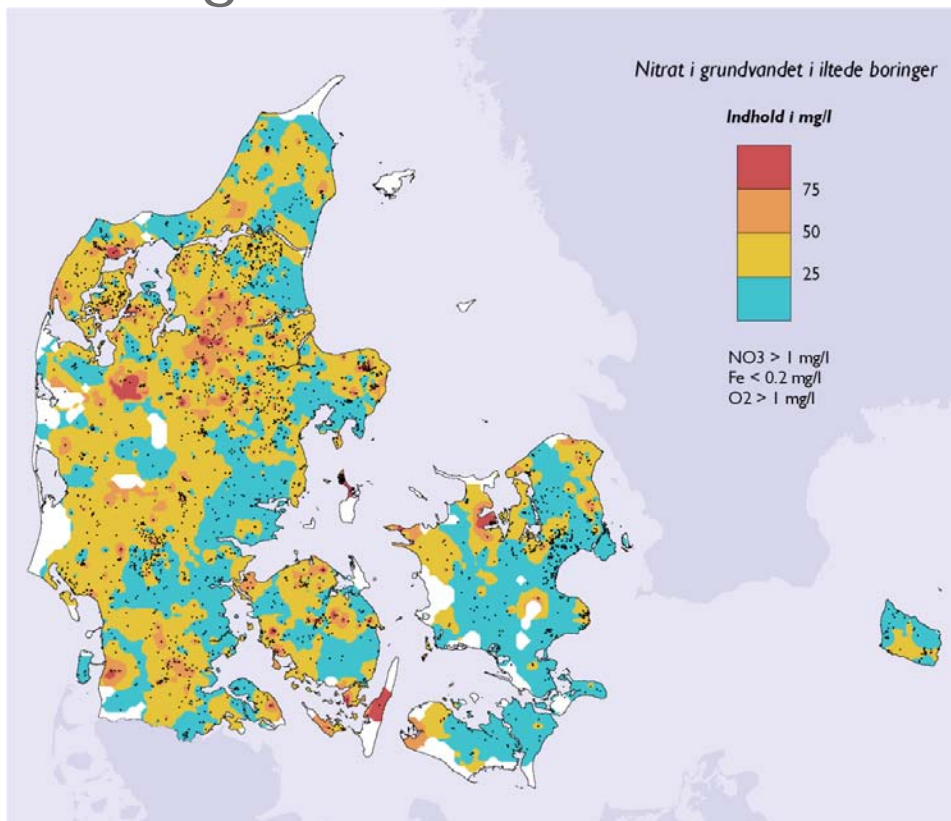


**Small private water supplies have higher concentrations!
(22 % > 50 mg/l & 40 % > 25 mg/l)**

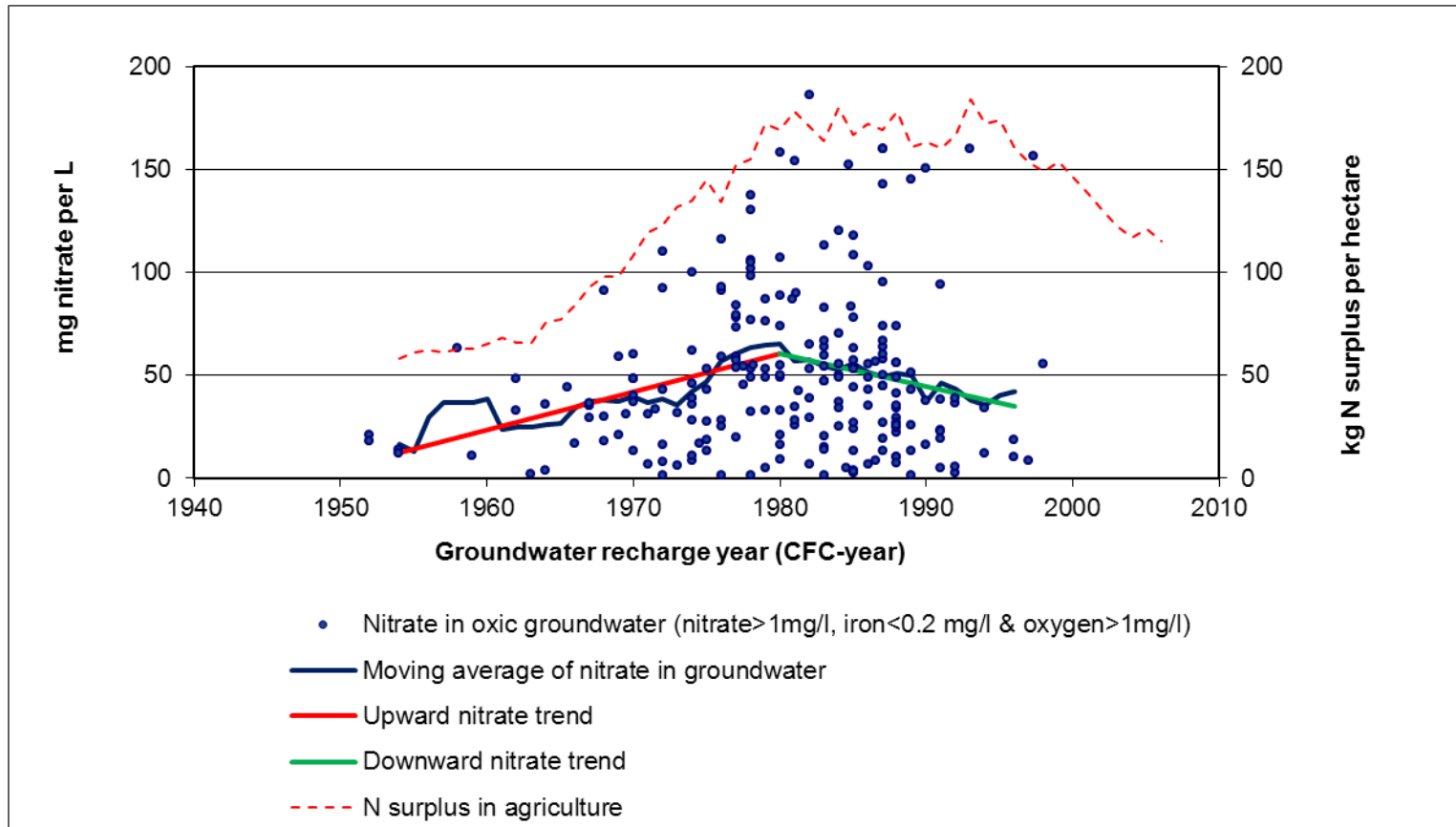


Nitrate in oxic groundwater and drinking water (mg/l)

Oxic groundwater



Nitrate trends in oxic groundwater (mg/l)



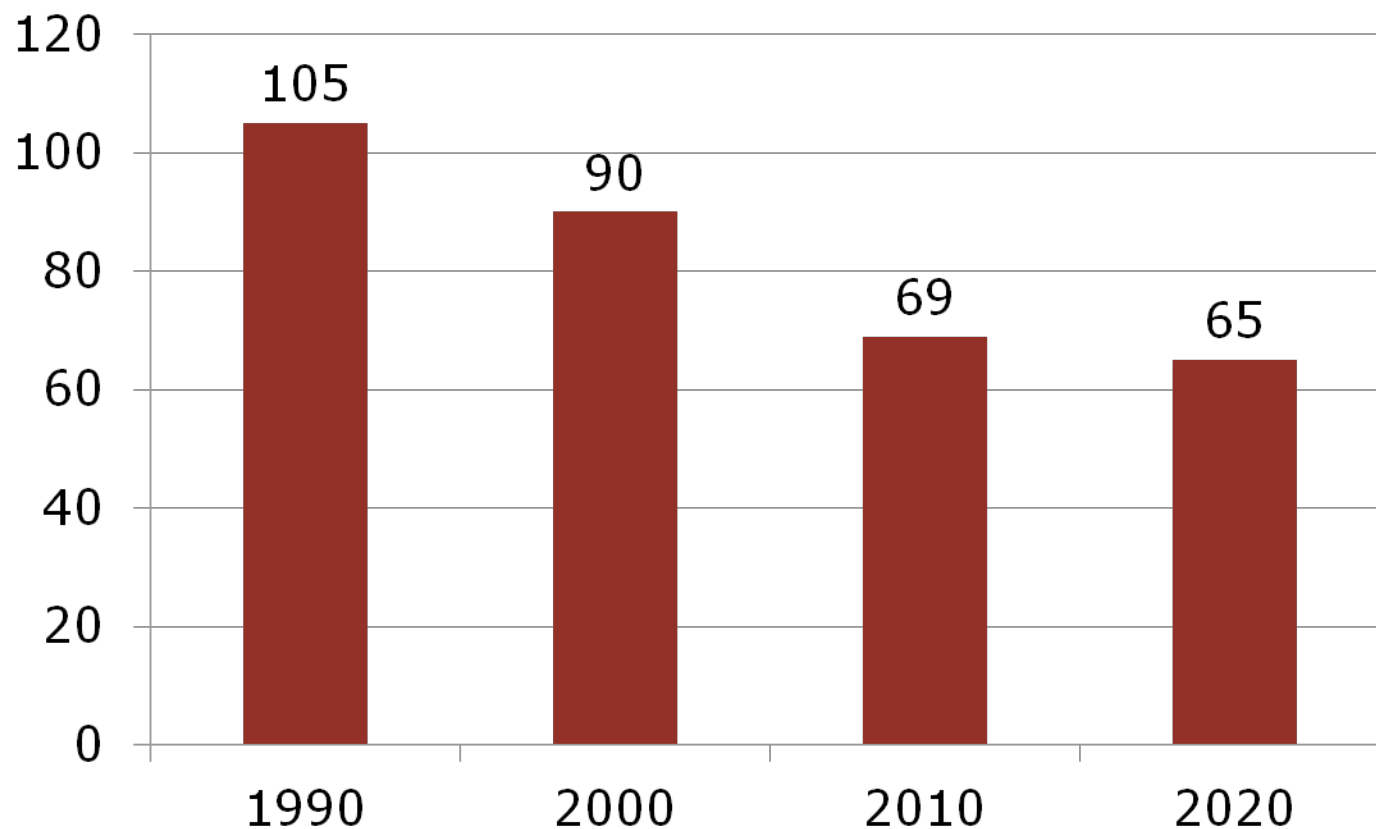
WFD issues:

ca. 40 % of the Danish oxic groundwater has > 50 mg nitrate/l

ca. 33 % upward nitrate trends in Danish oxic groundwater



Ammonia Emission in Denmark (1000 ton NH₃)



Ammonia Emission in Denmark (1000 ton NH₃)

